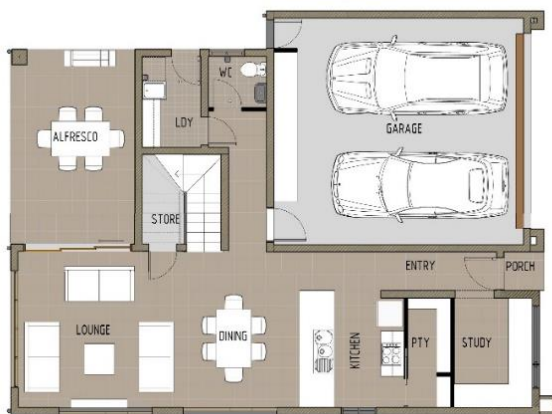




Yandina

4 2 2



- Combined kitchen, living & dining
- Kitchen with walk in butler's pantry
- Three bedrooms with built in robes
- Master bedroom with his & hers w.i.r & huge ensuite
- Large rumpus room upstairs
- Study area downstairs
- Large alfresco area

Area	
Ground	75.30 m2
First	113.20 m2
Garage	41.00 m2
Alfresco	15.70 m2
Porch	1.00 m2
Total	246.20 m2

Iconic Construction Group Pty Ltd
 QBCC Licence No. 130 5271 | ABN. 59 603 565 493

07 4667 0085 | 0407 157 983



Photographs & illustrations are intended to be a visual aid only. Iconic Construction Group Pty Ltd gives no warranty and makes no representation to the accuracy or sufficiency of any description, illustrations, photograph or statement contained in this brochure and accepts no liability for any loss suffered by any person who relies on either wholly or partly upon the information presented. All information is subject to change without notice.

www.iconicc.com.au